

Benda Simmental Ranch

Annual Production Sale

Monday, February 10, 2025

Kimball Livestock Exchange, Kimball SD

WWW.BENDARANCH.COM

Home: 605-778-6703 • Jim's Cell: 605-730-6703 • Jay's Cell: 605-730-0215



This sale will be broadcast live on the internet.
DVAuction
Broadcasting Real-Time Auctions
Real time bidding & proxy bidding available.

Benda Ranch **Simmentals & SimAngus**

Annual Production Sale

Selling 58 Bulls

Monday, February 10, 2025 1:00 P.M.

Kimball Livestock Exchange Kimball, South Dakota

Sale Day Phone 605-778-6211

STORM DATE: FEBRUARY 17, 2025

Welcome all to our 2025 Production Sale!

What a blessing it has been for us to do what we love for 50+ years. A special thanks to all those who have believed in our program over the years. It remains our goal to produce cattle that have a balance of calving ease, performance and maternal traits. Cattle with good dispositions are super important to us.

The year 2024 was very good to us in central South Dakota. The pastures and hay lands were some of the best we've ever seen.

Our bulls are raised with only mama's milk and NO creep feed. The calves were weaned mid September and fed a TMR of ground hay, corn silage, corn and pelleted protein supplement.

This set of bulls weaned lighter than last year but post weaning gains have been exceptional on a grower ration. Our entire cow herd is enrolled in ASA's Total Herd Enrollment (THE) so the ratios you see in the catalog include every bull calf born on our ranch. All the bulls in our sale are polled. Most all are homozygous polled and black either by test or pedigree unless otherwise noted.

Once again we will have videos of the bulls on our website and on the DVAuction site late January. Feel free to give us a call anytime or stop by the ranch prior to the sale to evaluate the bulls. Hope to see you Feb. 10 in Kimball.



Benda Family Christmas 2024

Schedule:

Sunday, Feb. 9	Cattle on display
Monday, Feb. 10	8:00 A.M. Cattle on display
	11:30 A.M. Complimentary Lunch
	1:00 P.M. Benda Ranch Sale

Sale Staff:

Curt Westland, Tri-State Livestock News	605-210-3329
Jeff Kapperman, Tri-State Neighbor	605-940-5104
Korbin Leddy, Cattle Business Weekley	605-467-3065
Chad Heezen, Kimball Livestock Auction	605-870-0697
Wade Christensen, Kimball Livestock Auction ..	605-730-1801
Dick Deffenbaugh, Kimball Livestock Auction ...	605-680-1324
Justin Dikoff, DVAuction	605-290-0635
Wayne Tupper	605-680-1000
Ken Odde, ASA Representative	605-848-4479

Auctioneer:

Justin Tupper	605-680-0259
---------------------	--------------

Motel Accommodations:

Dakota Winds Motel ..	605-778-6215 or 1-888-751-1265
Westwood Inn & Suites	605-778-6088

EPDs:

Please note these EPDs will update frequently. To look up current EPD's, click on the Animal Search tab on www.simmental.org and type in their registration # in the search box.

Announcements:

Announcements made sale day take precedence over printed material in the sale catalog. Anyone attending this sale attends at their own risk. Benda Ranch and sale force will not be held responsible for any personal injury while attending this sale.

Terms of Sale:

Terms of sale are cash and the new owner is responsible for the bulls following the sale. Please let the sale clerks know if you plan on hauling your bull home sale day or if you want Jim to take them home to be wintered.

Semen:

Benda Ranch retains 1/3 revenue sharing interest in semen sold from bulls in this sale.

Health:

May	Bovi-Gold One Shot Combo
	Vision 7 Somnus
Sept	Bovi Gold One Shot Combo
	Vision 7/Somnus

Booster at weaning and poured with Cydectin, Clean Up, and dewormed with Safe-Guard. All bulls are free of genetic defects.

Trucking:

Benda Ranch will assist buyers in making the most economical trucking possible.

Wintering the Bulls:

Free wintering until April 1 and semen test or \$150 off if you take them sale day. However, we will not be responsible for injury or death to the bulls.

Feeding & Test:

The bulls have been wintered on a high roughage ration of corn silage, ground alfalfa intermediate hay mix, corn, and pelleted protein/mineral supplement. Bulls were on a 90 day test for ADG.

Guarantee:

All bulls are guaranteed through the first breeding season (90 days after turn out.) We strongly encourage you to purchase accident, sickness and disease (ASD) infertility insurance. We will pay half the price of insurance on one bull per customer. If an injury to a bull is not covered under insurance during this 90 day period, we will attempt to provide a suitable replacement bull. If one of equal value cannot be provided, we will issue a sale credit to be used in a future sale. Please contact us as soon as possible after a condition is observed that prevents the bull from being able to function as a breeder, and before he is sold.

Insurance forms will be available from Ray Trudeau of Martin-Trudeau Insurance Company. (605-996-3106) Mitchell, SD.

Directions to Sale Facility:

Sale facility is located on the northeast edge of Kimball, S.D.

Thank You:

Special thanks to Rudy and Lydia Niewenhuis, and Leroy Blom of Professional Alliance, Platte, SD for helping sponsor and serving the lunch.



P.O. Box 188
Platte, SD 57369
Office: 605-337-9792

Catalog
design and
printing by:





BENDA RANCH HERD REFERENCE SIREs



EPD'S as of 1-5-25

REGISTRATION	NAME	BREED	CE	BW	WW	YW	MCE	MM	MWW	DOC	MARB	REA	API	TI
3253742	Hook's Eagle 6E	3/4 SM, 1/4 AN	14.6	-2.3	98.0	152.5	4.5	19.6	68.5	19.0	0.52	1.40	159.1	101.5
3633422	3BS Earl 90G	PB SM	7.5	3.1	94.4	133.2	4.1	27.4	74.5	17.9	0.16	0.95	136.6	86.4
3681957	Deer Valley Growth Fund	PB Angus	15.6	-0.9	111.7	192.8	10.6	27.6	83.1	13.9	0.53	0.52	136.2	95.0
4131424	M&E True North 201	PB Angus	16.7	-3.3	86.4	144.9	11.4	33.9	77.0	12.4	0.90	0.69	150.3	93.1
3929093	KRJ Dakota Made J172	3/4 SM, 1/4 AN	13.8	-0.6	77.0	120.7	5.7	18.6	57.0	11.0	0.08	1.05	118.3	75.4
3312276	KBHR High Road E283	PB SM	15.7	-1.3	92.5	144.8	8.9	25.4	71.6	15.5	0.54	1.18	173.4	102.2
3549340	GW Copperhead 919G	1/2 SM, 5/16 AR, 3/16 AN	13.8	-1.6	86.7	138.0	10.7	27.7	71.0	23.3	0.88	0.80	170.4	103.1
3561070	Bridle Bit Resource G9117	PB SM	16.9	-1.4	82.9	133.7	11.6	33.5	74.9	15.3	0.38	1.30	166.9	94.0
4029546	JC Mr. Pontiac D114K	3/4 SM 1/4 AN	13.1	-1.5	88.8	135.1	7.8	23.7	68.0	15.6	0.64	1.07	167.2	96.9
3404807	Gibbs 7382E Broad Range	PB SM	15.3	-2.2	87.7	145.7	9.5	20.9	64.7	13.4	0.26	1.14	148.9	92.7
4104275	KBHR Revved Up K157	PB SM	13.1	-0.3	78.7	119.2	8.4	19.6	58.9	12.7	0.70	1.06	177.3	95.0
3585120	Schooley Standout 27G	PB SM	15.3	-2.1	64.1	84.6	9.1	20.5	52.5	18.0	0.43	0.33	154.5	80.7
3709222	CLRS Homeland 327H	5/8 SM 3/8 AN	10.9	0.6	88.8	141.5	7.8	26.4	70.7	9.3	0.63	1.25	164.8	95.5

2025 Purebred Simmental Avg. EPD's

CE	BW	WW	YW	ADG	MCE	MM			
11.4	1.4	77.6	115.9	0.24	5.8	23.0			
MWW	STAY	DOC	CW	YG	MARB	BFAT	REA	API	TI
61.7	15.5	11.6	27.3	-0.39	0.16	-0.07	0.86	132.14	80.11

2025 Hybrid Simmental Avg. EPD's

		CE	BW	WW	YW	ADG	MCE	MM	
		12.5	0.20	75.5	116.9	0.26	6.8	23.8	
MWW	STAY	DOC	CW	YG	MARB	BFAT	REA	API	TI
61.8	14.6	12.3	32.5	-0.21	0.36	-0.04	0.67	133.49	80.95



Buying online is as easy as 1, 2, 3...

1. Create an account at www.dvauction.com under the "register" tab
2. Apply for bidding approval by clicking on the "details" tab at least 24 hours prior to the auction-a DV representative will notify you once you have been approved
3. Tune in for the sale and make your purchases!

After the sale, contact the sale manager or owner to arrange transportation and payment. **High speed internet** is required for successful bidding-be sure to check the lag-time monitor in the top left corner to ensure real-time broadcasts.

Proxy Bidding-if you can't make time to watch the sale, register a proxy bid and let our system represent your bid while you're away. Look for the "proxy bid" tab on the auction listing, and fill in your maximum bids. We'll handle the rest!

Having troubles?

During the auction, you can type a message to the operator at any time for assistance. Our full-time support team can also always be reached at (402) 474-5557.

1

JBS Mr Eagle 908M

BD: 3-12-24 Black, Polled, 5/8 SM Reg. #4432920
 Act. BW: 90 lbs. Adj. 205 Wt: 760 WW Ratio: 115 Adj. YW: 1315
 1-1-25 wt: 1090 90 Day ADG: 3.6 Frame: 6.4 Act. Scrotal: 38

Hook's Black Hawk 50B

Hook's Eagle 6E

Hook's Crystal 1C

Hart All In 6036

JBS Miss All In 724G

JBS Miss Casino 819E

	CE	BW	WW	YW	ADG	
	11.5	0.7	100.1	168.0	0.42	
MCE	MM	MWW	Stay	DOC	CW	YG
5.6	23.3	71.9	15.1	18.0	46.6	-0.25
	MARB	B FAT	REA	API	TI	
	0.46	-0.035	1.01	150.2	97.2	

Dam: 4 calves/113 WWR

Homo Black, Homo Polled

The saying is "if it ain't broke...don't fix it." That's why we start with the full brother to last year's Lot 1 bull that was our second high seller at \$13,000 to JLK Simmentals. Like his brother he is a stylish smooth made bull that's thick, deep bodied with extra length. Super disposition and one of the largest scrotal bulls. Ranks #1 in the breed for WW, YW and #3 or better for ADG, MWW, and docility. Ranked #9/121 at weaning.

**Lot 1**

2

JBS Mr Eagle 211M

BD: 2-16-24 Black, Polled, PB SM Reg. #4433025
 Act. BW: 75 lbs Adj. 205 Wt: 791 WW Ratio: 120 Adj. YW: 1325
 1-1-25 wt: 1110 90 Day ADG: 3.4 Frame: 6.2 Act. Scrotal: 33

Hook's Black Hawk 50B

Hook's Eagle 6E

Hook's Crystal 1C

KBHR High Road E283

JBS Miss High Road 028K

JBS Miss Night Watch 818H

	CE	BW	WW	YW	ADG	
	14.6	-1.9	102.5	155.3	0.33	
MCE	MM	MWW	Stay	DOC	CW	YG
6.4	22.0	70.0	15.8	15.0	38.8	-0.39
	MARB	B FAT	REA	API	TI	
	0.43	-0.051	1.22	167.1	104.8	

Homo Black, Homo Polled

We debated long and hard about keeping this bull for ourselves. A truly royal calving ease pedigree with 14 EPD's in the top 30% or better. Comes from a heifer that ratioed 120 and #3/121 on her first calf. Extremely thick and deep bodies with eye appeal that's hard to miss. His easy going nature is another plus.

**Lot 2**

3

JBS Mr Eagle 264M

BD: 2-20-24 Black, Polled, PB SM Reg. #4432992
 Act. BW: 96 lbs Adj. 205 Wt: 714 WW Ratio: 108 Adj. YW: 1260
 1-1-25 wt: 1015 90 Day ADG: 3.4 Frame: 6.6 Act. Scrotal: 35

Hook's Black Hawk 50B

Hook's Eagle 6E

Hook's Crystal 1C

DCR Mr Domination D76

JBS Miss Domination 819K

JBS Miss Eldorado 308F

	CE	BW	WW	YW	ADG	
	10.6	1.5	94.4	143.7	0.31	
MCE	MM	MWW	Stay	DOC	CW	YG
5.4	24.3	69.8	15.8	15.6	35.3	-0.4
	MARB	B FAT	REA	API	TI	
	0.3	-0.063	1.11	145.7	92.4	

Homo Black, Homo Polled

A larger framed bull with length of body to add extra pounds. Top performing bull that should produce those scale busting steers. His first calf dam is a powerful female that had her first born backwards with a little assistance. Ratioed #27/121.

**Lot 3**

4

JBS Mr Eagle 249M

BD: 2-19-24 Black, Polled, 3/4 SM Reg. #4432849
 Act. BW: 96 lbs Adj. 205 Wt: 694 WW Ratio: 105 Adj. YW: 1345
 1-1-25 wt: 1060 90 Day ADG: 4.1 Frame: 6.7 Act. Scrotal: 34

Hook's Black Hawk 50B

Hook's Eagle 6E

Hook's Crystal 1C

3BS Earl 90G

JBS Miss Earl 760K

JBS Miss Santa Fe 701E

	CE	BW	WW	YW	ADG	
	10.8	1.0	93.7	140.4	0.29	
MCE	MM	MWW	Stay	DOC	CW	YG
5.4	18.3	64.1	17.6	16.5	38.4	-0.35
	MARB	B FAT	REA	API	TI	
	0.37	-0.053	1.06	151.2	92.5	

Hetero Black

Fancy 3/4 bull out of a 1st calf 3BS Earl daughter so the growth gene is bred in. Ranked #42/121. Tied for second high gainer on test.

**Lot 4**

5

JBS Mr Eagle 260M

BD: 2-18-24 Black, Polled, PB SM Reg. #4433015
 Act. BW: 80 lbs Adj. 205 Wt: 671 WW Ratio: 102 Adj. YW: 1180
 1-1-25 wt: 955 90 Day ADG: 3.2 Frame: 5.8 Act. Scrotal: 35

Hook's Black Hawk 50B

Hook's Eagle 6E

Hook's Crystal 1C

LBRS Genesis G69

JBS Miss Genesis 331K

JBS Miss Force 120A

	CE	BW	WW	YW	ADG	
	12.9	-0.6	97.5	148.0	0.32	
MCE	MM	MWW	Stay	DOC	CW	YG
5.0	27.1	75.8	16.1	17.4	45.3	-0.34
	MARB	B FAT	REA	API	TI	
	0.57	-0.041	1.23	168.0	103.6	

Homo Black

PB Eagle from a super productive cow family. Excellent EPD's and his 12 year old granddam is still here and has been a top producer.

6

JBS Mr Eagle 213M

BD: 2-23-24 Black, Polled, 3/4 SM Reg. #4433036
 Act. BW: 80 lbs Adj. 205 Wt: 675 WW Ratio: 102 Adj. YW: 1150
 1-1-25 wt: 940 90 Day ADG: 3.0 Frame: 5.9 Act. Scrotal: 32

Hook's Black Hawk 50B

Hook's Eagle 6E

Hook's Crystal 1C

KBHR High Road E283

JBS Miss High Road 074K

JBS Miss Boulder 841H

	CE	BW	WW	YW	ADG	
	14.4	-1.5	90.9	142.6	0.32	
MCE	MM	MWW	Stay	DOC	CW	YG
6.3	23.6	68.9	16.5	16.6	38.8	-0.36
	MARB	B FAT	REA	API	TI	
	0.52	-0.048	1.15	165.4	98.6	

Homo Black

Moderate framed 3/4 blood with more calving ease built in.

7

JBS Mr Growth Fund 940M

BD: 3-14-24 Black, Polled, 1/2 SM Reg. #4432925
 Act. BW: 100 lbs Adj. 205 Wt: 799 WW Ratio: 121 Adj. YW: 1510
 1-1-25 wt: 1210 90 Day ADG: 4.4 Frame: 6.6 Act. Scrotal: 36

Basin Payweight 1682

Deer Valley Growth Fund

Deer Valley Rita 36113

AS/GLS Pacesetter U862

JBS Miss Pace 124G

JBS Miss Mo Better 509Y

	CE	BW	WW	YW	ADG	
	12.2	1.4	104.5	170.2	0.41	
MCE	MM	MWW	Stay	DOC	CW	YG
8.9	26.3	74.2	15.1	14.1	67.1	-0.01
	MARB	B FAT	REA	API	TI	
	0.33	-0.006	0.74	140.2	93.8	

Dam: 4 calves/108 WWR

Homo Black, Homo Polled

He may be one of our best bulls ever. Our #1 WW bull out of 121. These Growth Fund bulls are flat out good if you're looking for 1/2 blood bulls. His full sister was the pick of our open heifers in last year's sale to Eichacker Simmentals at \$9,750. EPD's in the top 1% for WW, YW, ADG, MWW and CW. To top it off he was our #1 gaining bull at 4.4 lbs/day.

**Lot 7**

8

JBS Mr Growth Fund 853M

BD: 2-29-24 Black, Polled, 1/2 SM Reg. #4432972
 Act. BW: 84 lbs Adj. 205 Wt: 712 WW Ratio: 108 Adj. YW: 1285
 1-1-25 wt: 1090 90 Day ADG: 3.6 Frame: 6.1 Act. Scrotal: 35.5

Basin Payweight 1682

Deer Valley Growth Fund

Deer Valley Rita 36113

DCR Mr Domination D76

JBS Miss Domination 121F

JBS Miss Focus 205 812Y

	CE	BW	WW	YW	ADG	
	12.7	0.3	92.2	149.6	0.36	
MCE	MM	MWW	Stay	DOC	CW	YG
8.2	27.8	72.8	15.2	10.5	56.1	0.03
	MARB	B FAT	REA	API	TI	
	0.35	-0.002	0.52	139.2	88.6	

Dam: 5 calves/101 WWR

Homo Black

Deep bodied, thick and heavy muscled power bull. Full sister is one of our top bred heifers. Her last 4 calves ratioed 107. This guy has emerged as one of our top herd bull prospects.

**Lot 8**

9

JBS Mr Growth Fund 849M

BD: 3-4-24 Black, Polled, 1/2 SM Reg. #4432924
 Act. BW: 85 lbs Adj. 205 Wt: 715 WW Ratio: 108 Adj. YW: 1260
 1-1-25 wt: 1065 90 Day ADG: 3.4 Frame: 6.4 Act. Scrotal: 36

Basin Payweight 1682

Deer Valley Growth Fund

Deer Valley Rita 36113

Hart 094B

JBS Miss Final Sort 204F

JBS Miss Minifest 011Z

	CE	BW	WW	YW	ADG	
	12.4	0.6	99.9	163.8	0.4	
MCE	MM	MWW	Stay	DOC	CW	YG
8.5	30.3	79.0	14.6	12.5	66.0	0.01
	MARB	B FAT	REA	API	TI	
	0.29	-0.006	0.67	137.2	91.5	

Dam: 5 calves/110 WWR

Homo Black

Standout 1/2 blood that ranked #26/121 at weaning. This stud has a great future ahead. Really nice set of EPD's.

**Lot 9**



JBS Mr Growth Fund 820M

BD: 3-7-24 Black, Polled, 1/2 SM Reg. #4432921
 Act. BW: 81 lbs Adj. 205 Wt: 678 WW Ratio: 103 Adj. YW: 1330
 1-1-25 wt: 1080 90 Day ADG: 4.1 Frame: 6.2 Act. Scrotal: 34.5

Basin Payweight 1682
Deer Valley Growth Fund
 Deer Valley Rita 36113
 WCS El Dorado 5209C
JBS Miss Eldorado 306F
 JBS Miss Dew It Right 021Z

	CE	BW	WW	YW	ADG	
	13.7	-0.9	91.9	149.1	0.36	
MCE	MM	MWW	Stay	DOC	CW	YG
9.6	31.6	77.4	13.5	12.8	66.3	-0.02
	MARB	B FAT	REA	API	TI	
	0.26	-0.008	0.75	133.8	87.8	

Dam: 4 calves/101 WWR
 Homo Black, Homo Polled
 These Growth Funds are all so much alike, I find myself repeating everything about them. Weaned well above average and tied for second high rate of gain.



JBS Mr Growth Fund 073M

BD: 3-12-24 Black, Polled, 1/2 SM Reg. #4432993
 Act. BW: 83 lbs Adj. 205 Wt: 751 WW Ratio: 114 Adj. YW: 1320
 1-1-25 wt: 1075 90 Day ADG: 3.6 Frame: 6.0 Act. Scrotal: 36

Basin Payweight 1682
Deer Valley Growth Fund
 Deer Valley Rita 36113
 BBS True Justice B10
JBS Miss Justice 901H
 JBS Miss Indy 144W

	CE	BW	WW	YW	ADG	
	12.4	0.5	100.0	161.0	0.38	
MCE	MM	MWW	Stay	DOC	CW	YG
9.4	26.4	74.2	15.4	10.4	60.3	-0.05
	MARB	B FAT	REA	API	TI	
	0.25	-0.016	0.71	137.1	90.6	

Dam: 3 calves/100 WWR
 Hetero Black, Homo Polled
 Another one of my favorites that ranked #11/121. This mating really clicked.



JBS Mr Growth Fund 447M

BD: 3-7-24 Black, Polled, 1/2 SM 1/2 AN Reg. #4433002
 Act. BW: 96 lbs Adj. 205 Wt: 775 WW Ratio: 118 Adj. YW: 1290
 1-1-25 wt: 1095 90 Day ADG: 3.2 Frame: 6.9 Act. Scrotal: 33.5

Basin Payweight 1682
Deer Valley Growth Fund
 Deer Valley Rita 36113
 Mr Ishee Superstout 014
JBS Miss Superstout 107B
 JBS Miss Big Sky 0938Y

	CE	BW	WW	YW	ADG	
	10.4	2.2	102.6	164.6	0.39	
MCE	MM	MWW	Stay	DOC	CW	YG
8.3	28.1	76.1	13.7	12.9	60.4	-0.04
	MARB	B FAT	REA	API	TI	
	0.34	-0.013	0.7	132.6	91.6	

Dam: 8 calves/106 WWR
 Hetero Black, Homo Polled
 Taller framed 1/2 blood that really pushed down the scale at weaning ranking #7/121. His dam has had several bulls in past sales.



JBS Mr Growth Fund 079M

BD: 3-16-24 Black, Polled, 1/2 SM 1/2 AN Reg. #4432923
 Act. BW: 82 lbs Adj. 205 Wt: 749 WW Ratio: 114 Adj. YW: 1370
 1-1-25 wt: 1090 90 Day ADG: 3.9 Frame: 5.7 Act. Scrotal: 35

Basin Payweight 1682
Deer Valley Growth Fund
 Deer Valley Rita 36113
 JBS Pathway 037D
JBS Miss Pathway 635D
 JBS Miss Arapa Gold 426D

	CE	BW	WW	YW	ADG	
	12.5	0.1	100.2	160.8	0.38	
MCE	MM	MWW	Stay	DOC	CW	YG
7.6	26.3	74.2	13.3	12.9	63.1	-0.03
	MARB	B FAT	REA	API	TI	
	0.26	-0.018	0.66	132.8	90.7	

Dam: 3 calves/104 WWR
 Hetero Black
 Another top G.F. that ratioed 114 and ranked #12/121. I guarantee you will like this guy. Full brother sold in last year's sale for \$7,000.



JBS Mr Growth Fund 163M

BD: 3-9-24 Black, Polled, 1/2 SM 1/2 AN Reg. #4432841
 Act. BW: 90 lbs Adj. 205 Wt: 669 WW Ratio: 101 Adj. YW: 1270
 1-1-25 wt: 985 90 Day ADG: 3.6 Frame: 6.0 Act. Scrotal: 34.5

Basin Payweight 1682
Deer Valley Growth Fund
 Deer Valley Rita 36113
 TSN All Around F637
JBS Miss 637 730J
 JBS Miss Casino 067E

	CE	BW	WW	YW	ADG	
	12.2	0.6	87.4	143.8	0.35	
MCE	MM	MWW	Stay	DOC	CW	YG
9.3	24.0	67.2	13.8	12.9	57.9	0.00
	MARB	B FAT	REA	API	TI	
	0.36	-0.006	0.6	133.3	84.7	

Dam: 2 calves/97 WWR
 Homo Black
 Star faced 1/2 blood with style and stretch.



15 JBS Mr Growth Fund 159M

BD: 3-17-24 Black, Polled, 1/2 SM 1/2 AN Reg. #4432898
 Act. BW: 90 lbs Adj. 205 Wt: 703 WW Ratio: 107 Adj. YW: 1280
 1-1-25 wt: 1000 90 Day ADG: 3.6 Frame: 6.1 Act. Scrotal: 32

Basin Payweight 1682
Deer Valley Growth Fund

Deer Valley Rita 36113
 TNT Tanker U263

JBS Miss Tanker 607J

JBS Miss Casino 750D

Dam: 2 calves/104 WWR

Homo Black, Homo Polled

Backed by a solid producing cow family, Ranked #36/121 and gained well above average.

	CE	BW	WW	YW	ADG	
	10.1	1.7	101.1	165.7	0.4	
MCE	MM	MWW	Stay	DOC	CW	YG
8.5	25.6	74.9	14.0	13.5	70.0	-0.04
	MARB	B FAT	REA	API	TI	
	0.22	-0.016	0.8	127.0	88.1	

18 JBS Mr Dakota 806M

BD: 2-26-24 Black, Polled, PB SM Reg. #4432919
 Act. BW: 90 lbs Adj. 205 Wt: 714 WW Ratio: 108 Adj. YW: 1295
 1-1-25 wt: 1095 90 Day ADG: 3.6 Frame: 6.7 Act. Scrotal: 35

KRJ Dakota Outlaw G974

KRJ Dakota Made J172

Double J Miss X066

LRS Elevate 213B

JBS Miss Elevate 316F

JBS Miss Diamond 815A

Dam: 5 calves/99 WWR

Homo Black, Hetero Polled

A PB Dakota Made that has had our attention from Day 1. These Dakota sons all have what commercial cattlemen are looking for, moderate BW and top performance.

	CE	BW	WW	YW	ADG	
	12.2	0.1	79.0	122.1	0.27	
MCE	MM	MWW	Stay	DOC	CW	YG
5.3	20.4	57.8	14.3	9.7	27.5	-0.43
	MARB	B FAT	REA	API	TI	
	0.05	-0.079	0.97	127.4	78.4	

16 JBS Mr Growth Fund 505M

BD: 3-11-24 Black, Polled, 1/2 SM Reg. #4432974
 Act. BW: 87 lbs Adj. 205 Wt: 648 WW Ratio: 98 Adj. YW: 1235
 1-1-25 wt: 1000 90 Day ADG: 3.7 Frame: 5.9 Act. Scrotal: 34.5

Basin Payweight 1682

Deer Valley Growth Fund

Deer Valley Rita 36113

Welshs Dew It Right 067T

JBS Ms Dew It Right 332C

JBS Miss Mo Better 057A

Dam: 6 calves/96 WWR

Homo Black

Thick made moderate framed Growth Fund with more calving ease. His dam is by Dew It Right which are some of my favorite cows. Full brother sold in last year's sale for \$6,750.

	CE	BW	WW	YW	ADG	
	13.7	-1.0	84.0	137.8	0.34	
MCE	MM	MWW	Stay	DOC	CW	YG
8.8	27.2	69.6	14.8	12.8	60.2	0.01
	MARB	B FAT	REA	API	TI	
	0.31	-0.009	0.57	135.7	83.6	



Lot 18

17 JBS Mr Dakota 841M

BD: 3-10-24 Black, Polled, 5/8 SM Reg. #4432976
 Act. BW: 87 lbs Adj. 205 Wt: 745 WW Ratio: 113 Adj. YW: 1300
 1-1-25 wt: 1100 90 Day ADG: 3.5 Frame: 6.2 Act. Scrotal: 36

KRJ Dakota Outlaw G974

KRJ Dakota Made J172

Double J Miss X066

KCF Bennett Absolute

JBS Miss Absolute 929F

JBS Miss Pref. Beef 654W

Dam: 5 calves/106 WWR

Homo Black

This Dakota Made son has been a standout all summer. Early visitors have picked him as one of their favorites. Outstanding depth, length and thickness in a very eye appealing moderate framed package. This Simm-Angus should be on everyone's short list.

	CE	BW	WW	YW	ADG	
	13.0	0.2	85.0	133.5	0.3	
MCE	MM	MWW	Stay	DOC	CW	YG
6.1	21.5	61.4	15.6	9.5	36.6	-0.25
	MARB	B FAT	REA	API	TI	
	0.21	-0.048	0.77	134.5	82.6	

19 JBS Mr Dakota 733M

BD: 3-21-24 Black, Polled, PB SM Reg. #4432933
 Act. BW: 105 lbs Adj. 205 Wt: 708 WW Ratio: 107 Adj. YW: 1235
 1-1-25 wt: 990 90 Day ADG: 3.2 Frame: 6.5 Act. Scrotal: 35.5

KRJ Dakota Outlaw G974

KRJ Dakota Made J172

Double J Miss X066

JBS Big Casino 336Y

JBS Miss Casino 021E

JBS Miss Pace 340X

Dam: 6 calves/107 WWR

Homo Black

This young stud was near the top at weaning. His Big Casino dam has been one of our best.

	CE	BW	WW	YW	ADG	
	11.1	1.7	81.8	125.5	0.27	
MCE	MM	MWW	Stay	DOC	CW	YG
5.9	21.0	59.6	16.8	11.6	27.1	-0.39
	MARB	B FAT	REA	API	TI	
	0.03	-0.076	0.87	128.2	77.6	



Lot 17



Lot 19



JBS Mr Dakota 642M

BD: 3-16-24 Black, Polled, 3/4 SM Reg. #4432864
 Act. BW: 82 lbs Adj. 205 Wt: 616 WW Ratio: 93 Adj. YW: 1050
 1-1-25 wt: 865 90 Day ADG: 2.7 Frame: 5.0 Act. Scrotal: 34.5

KRJ Dakota Outlaw G974

KRJ Dakota Made J172

Double J Miss X066

JBS Mr Force 107A

JBS Miss Sky Force 24D

JBS Ms NLC F Choice 2050Z

	CE	BW	WW	YW	ADG	
	12.7	-0.6	63.3	98.2	0.22	
MCE	MM	MWW	Stay	DOC	CW	YG
4.9	21.4	54.2	16.1	11.2	25.2	-0.38
	MARB	B FAT	REA	API	TI	
	0.17	-0.071	0.84	131.0	71.9	

Dam: 7 calves/94 WWR

One of our smaller framed bulls that should have good calving ease. This guy as a young calf was the pretty boy of the entire crop.



JBS Mr Dakota 067M

BD: 3-31-24 Black, Polled, 5/8 SM Reg. #4433021
 Act. BW: 98 lbs Adj. 205 Wt: 725 WW Ratio: 110 Adj. YW: 1225
 1-1-25 wt: 950 90 Day ADG: 3.1 Frame: 5.7 Act. Scrotal: 35

KRJ Dakota Outlaw G974

KRJ Dakota Made J172

Double J Miss X066

JBS Mr Cowboy Cut 710E

JBS Miss 710CC 511H

JBS Miss Casino 701C

	CE	BW	WW	YW	ADG	
	10.6	2.3	84.1	127.8	0.27	
MCE	MM	MWW	Stay	DOC	CW	YG
5.8	21.9	61.3	17.1	11.9	29.2	-0.33
	MARB	B FAT	REA	API	TI	
	0.17	-0.068	0.79	133.1	80.5	

Dam: 3 calves/108 WWR

Homo Black, Homo Polled

A top weaning calf with Cowboy Cut and Big Casino on the dam side. Ranked 21/121.



JBS Mr Dakota 045M

BD: 3-12-24 Black, Polled, PB SM Reg. #4432863
 Act. BW: 100 lbs Adj. 205 Wt: 740 WW Ratio: 112 Adj. YW: 1215
 1-1-25 wt: 1000 90 Day ADG: 2.9 Frame: 6.5 Act. Scrotal: 34.5

KRJ Dakota Outlaw G974

KRJ Dakota Made J172

Double J Miss X066

Mr Domination D76

JBS Miss Domination 772H

JBS Miss DIR 311 528E

	CE	BW	WW	YW	ADG	
	10.1	2.7	84.0	127.4	0.27	
MCE	MM	MWW	Stay	DOC	CW	YG
5.7	19.3	58.3	15.0	11.2	27.0	-0.37
	MARB	B FAT	REA	API	TI	
	0.11	-0.075	0.8	126.1	79.0	

Dam: 3 calves/104 WWR

Hetero Black

Another high weaning wt. bull that ranked 17/121.



JBS Mr Dakota 719M

BD: 3-28-24 Black, Polled, 3/4 SM Reg. #4432901
 Act. BW: 79 lbs Adj. 205 Wt: 675 WW Ratio: 102 Adj. YW: 1165
 1-1-25 wt: 925 90 Day ADG: 3.1 Frame: 5.4 Act. Scrotal: 33.5

KRJ Dakota Outlaw G974

KRJ Dakota Made J172

Double J Miss X066

Hook's Broadway 11B

JBS Miss Broadway 803E

JBS Miss Magnitude 132U

	CE	BW	WW	YW	ADG	
	10.9	-0.2	76.8	117.8	0.26	
MCE	MM	MWW	Stay	DOC	CW	YG
3.5	26.3	64.4	16.7	9.7	30.4	-0.32
	MARB	B FAT	REA	API	TI	
	0.13	-0.066	0.77	131.0	78.1	

Dam: 6 calves/108 WWR

Homo Black

Dam has been one of our most consistent producers of high ratioing calves.



JBS Mr Boulder 217M

BD: 2-16-24 Black, Polled, 3/4 SM Reg. #4433034
 Act. BW: 72 lbs Adj. 205 Wt: 703 WW Ratio: 107 Adj. YW: 1200
 1-1-25 wt: 1000 90 Day ADG: 3.1 Frame: 6.1 Act. Scrotal: 36

Hoover Dam

CCR Boulder 1339A

CCR Ms L Taylor 1339Y

Colorado Bridle Bit E752

JBS Miss Colorado 041K

JBS Miss Domination 735H

	CE	BW	WW	YW	ADG	
	15.5	-2.3	75.8	115.9	0.25	
MCE	MM	MWW	Stay	DOC	CW	YG
8.5	25.2	61.7	16.9	15.7	20.6	-0.32
	MARB	B FAT	REA	API	TI	
	0.46	-0.069	0.62	155.8	87.5	

Hetero Black

This is one of the top calving ease bulls with EPD's to match. Boulders are bred to make efficient cows and fancy top cut steers.



JBS Mr High Road 905M

BD: 3-6-24 Black, Polled, PB SM Reg. #4432975
 Act. BW: 87 lbs Adj. 205 Wt: 691 WW Ratio: 105 Adj. YW: 1250
 1-1-25 wt: 1030 90 Day ADG: 3.5 Frame: 6.0 Act. Scrotal: 33.5

Hook's Beacon 56B

KBHR High Road E283

WS Miss Sugar C4

W/C Night Watch 84E

JBS Miss Night Watch 711G

JBS Miss Boise 201E

	CE	BW	WW	YW	ADG	
	14.9	-0.6	87.8	129.4	0.26	
MCE	MM	MWW	Stay	DOC	CW	YG
	8.5	26.9	70.0	16.3	14.0	34.6
						-0.34
	MARB	B FAT	REA	API	TI	
	0.037	-0.046	1.05	156.1	93.0	

Dam: 3 calves/105 WWR

Homo Black

We used High Road for several years and this may be one of the best yet. Moderate frame and excellent muscle expression. Dam is a beautiful young Night Watch daughter.





JBS Mr High Road 261M

BD: 2-18-24 Black, Polled, PB SM Reg. #4432899
 Act. BW: 76 lbs Adj. 205 Wt: 705 WW Ratio: 107 Adj. YW: 1285
 1-1-25 wt: 1030 90 Day ADG: 3.6 Frame: 6.2 Act. Scrotal: 37

Hook's Beacon 56B
KBHR High Road E283
 WS Miss Sugar C4
 LBRS Genesis G69
JBS Miss Genesis 112K
 JBS Miss Club King 409Y

	CE	BW	WW	YW	ADG	
	14.2	-0.9	95.4	146.4	0.32	
MCE	MM	MWW	Stay	DOC	CW	YG
6.7	26.9	73.8	17.6	14.6	46.2	-0.29
	MARB	B FAT	REA	API	TI	
	0.49	-0.051	1.0	168.6	101.0	

Homo Black, Homo Polled
 High Road built much like his previous lot brother with 15 EPD's in the top 30%.
 Performance and cow making genetics. Ranked in the top 25% at weaning.



JBS Mr Broad Range 738M

BD: 3-17-24 Black, Polled, 3/4 SM Reg. #4432876
 Act. BW: 102 lbs Adj. 205 Wt: 764 WW Ratio: 116 Adj. YW: 1290
 1-1-25 wt: 1070 90 Day ADG: 3.3 Frame: 6.2 Act. Scrotal: 34.5

CCR Wide Range 9005A
Gibbs 738E Broad Range
 SSF Blk Louise Y534
 SAV Renown 3439
JBS Miss Renown 203E
 JBS Miss Everready 006Z

	CE	BW	WW	YW	ADG	
	9.9	1.4	97.8	156.5	0.37	
MCE	MM	MWW	Stay	DOC	CW	YG
5.4	18.3	64.0	13.6	16.1	46.5	-0.17
	MARB	B FAT	REA	API	TI	
	0.21	-0.011	0.95	130.8	88.4	

Dam: 6 calves/103 WWR
 Homo Black, Homo Polled
 Our only Broad Range and he is a good one. At the top for WW rank at 8/121.
 #1 in the breed for WW, YW, ADG, and REA. Not many bulls can say that.



2024 Pheasant Hunt



JBS Mr True North 246M

BD: 3-4-24 Black, Polled, 1/2 SM Reg. #4433017
 Act. BW: 83 lbs Adj. 205 Wt: 706 WW Ratio: 107 Adj. YW: 1225
 1-1-25 wt: 970 90 Day ADG: 3.2 Frame: 5.8 Act. Scrotal: 36

Square B True North 8052
M&E True North 201
 MK Black Bess 1119
 3BS Earl 90G
JBS Miss Earl 525K
 JBS Miss Sky Force 116C

	CE	BW	WW	YW	ADG	
	13.2	-0.5	89.7	140.4	0.32	
MCE	MM	MWW	Stay	DOC	CW	YG
8.4	30.6	74.1	15.5	13.7	50.6	-0.11
	MARB	B FAT	REA	API	TI	
	0.56	-0.011	0.8	150.7	93.0	

Homo Black
 Leads off a tremendous set of True North sons that are all look-alike bulls.
 Calving ease prospects that are smooth made and phenotypically hard to fault.
 Sired by the high seller in M&E Angus 2022 sale. I will let you decide which is best. Ranked 32/121.



JBS Mr True North 269M

BD: 2-19-24 Black, Polled, 3/8 SM Reg. #4432842
 Act. BW: 73 lbs Adj. 205 Wt: 665 WW Ratio: 101 Adj. YW: 1300
 1-1-25 wt: 1030 90 Day ADG: 4.0 Frame: 5.7 Act. Scrotal: 37.5

Square B True North 8052
M&E True North 201
 MK Black Bess 1119
 UC Pasque H854 BLK
JBS Miss CC854 904K
 JBS Miss Boulder 544G

	CE	BW	WW	YW	ADG	
	15.0	-2.1	80.6	128.7	0.3	
MCE	MM	MWW	Stay	DOC	CW	YG
8.7	29.6	70.1	14.0	13.2	45.7	-0.09
	MARB	B FAT	REA	API	TI	
	0.62	-0.006	0.72	152.0	90.8	

Homo Black
 Blaze face and pretty as a picture. A real eye catcher with excellent EPD's.
 Should make excellent females with a top Milk number.



30

JBS Mr True North 237M

BD: 3-1-24 Black, Polled, 1/4 SM Reg. #4433041
 Act. BW: 77 lbs Adj. 205 Wt: 692 WW Ratio: 105 Adj. YW: 1235
 1-1-25 wt: 975 90 Day ADG: 3.4 Frame: 5.8 Act. Scrotal: 35

Square B True North 8052

M&E True North 201

MK Black Bess 1119

TJ Main Event 503B

JBS Miss Main Event 637K

JBS Miss Absolute 901D

	CE	BW	WW	YW	ADG	
	14.7	-1.6	89.5	143.4	0.34	
MCE	MM	MWW	Stay	DOC	CW	YG
8.2	30.0	74.0	13.4	11.6	54.5	-0.05
	MARB	B FAT	REA	API	TI	
	0.56	-0.001	0.76	148.3	93.3	

The only 1/4 Simmental and 3/4 Angus. Light BW and top 1/3 WW rank.

32

JBS Mr True North 214M

BD: 3-6-24 Black, Polled, 3/8 SM Reg. #4433038
 Act. BW: 76 lbs Adj. 205 Wt: 691 WW Ratio: 105 Adj. YW: 1225
 1-1-25 wt: 960 90 Day ADG: 3.3 Frame: 5.5 Act. Scrotal: 33

Square B True North 8052

M&E True North 201

MK Black Bess 1119

KBHR High Road E283

JBS Miss High Road 745K

JBS Miss Bismarck 652E

	CE	BW	WW	YW	ADG	
	15.8	-2.5	87.1	140.9	0.34	
MCE	MM	MWW	Stay	DOC	CW	YG
10.0	27.9	70.8	15.1	12.4	51.6	-0.07
	MARB	B FAT	REA	API	TI	
	0.62	0.001	0.79	158.5	95.0	

Only a 3/8 Simm and 5/8 Angus that is smaller framed with calving ease and well above average WW.

31

JBS Mr True North 258M

BD: 3-10-24 Black, Polled, 1/2 SM Reg. #4433029
 Act. BW: 78 lbs Adj. 205 Wt: 697 WW Ratio: 106 Adj. YW: 1265
 1-1-25 wt: 980 90 Day ADG: 3.6 Frame: 5.6 Act. Scrotal: 34.5

Square B True North 8052

M&E True North 201

MK Black Bess 1119

BCLR Cash Flow C820

JBS Miss Cash Flow 0812K

JBS Miss Boise115F

	CE	BW	WW	YW	ADG	
	14.7	-1.1	90.4	141.1	0.32	
MCE	MM	MWW	Stay	DOC	CW	YG
8.8	24.7	69.0	14.9	12.2	47.3	-0.18
	MARB	B FAT	REA	API	TI	
	0.48	-0.011	0.98	149.3	92.4	

Homo Black, Homo Polled
 Attractive 1/2 blood with light BW and top 1/3 WW rank. Really balanced set of EPD's.



33

JBS Mr Pontiac 158M

BD: 3-4-24 Black, Polled, PB SM Reg. #4432909
 Act. BW: 102 lbs Adj. 205 Wt: 780 WW Ratio: 118 Adj. YW: 1305
 1-1-25 wt: 1070 90 Day ADG: 3.3 Frame: 6.0 Act. Scrotal: 33

Gibbs 9114G Essential

JC Mr Pontiac D114K

FSCR D114 Lucille B089XP

TNT Tanker U263

JBS Miss Tanker 88J

3C Crocus 6586D

	CE	BW	WW	YW	ADG	
	9.9	1.5	102.0	160.0	0.36	
MCE	MM	MWW	Stay	DOC	CW	YG
8.3	19.0	66.3	19.5	14.6	47.0	-0.3
	MARB	B FAT	REA	API	TI	
	0.27	-0.058	1.21	154.4	95.8	

Dam: 2 calves/109 WWR

Homo Black, Homo Polled

This is a new sire group for us and they did not disappoint. Super deep bodied and thick butted bull that ratioed 118 and ranked 5/121. Performance built into this guy.



34

JBS Mr Pontiac 134M

BD: 3-2-24 Black, Polled, 3/4 SM Reg. #4432870
 Act. BW: 96 lbs Adj. 205 Wt: 720 WW Ratio: 109 Adj. YW: 1275
 1-1-25 wt: 1035 90 Day ADG: 3.4 Frame: 6.9 Act. Scrotal: 32.5

Gibbs 9114G Essential

JC Mr Pontiac D114K

FSCR D114 Lucille B089XP

WCS El Dorado 5209C

JBS Miss Eldorado 805J

JBS Miss Boulder 607F

	CE	BW	WW	YW	ADG	
	10.6	1.0	93.1	147.1	0.34	
MCE	MM	MWW	Stay	DOC	CW	YG
7.8	22.4	66.9	15.8	13.0	43.6	-0.35
	MARB	B FAT	REA	API	TI	
	0.36	-0.057	1.11	149.4	93.3	

Dam: 2 calves/102 WWR

Homo Black, Homo Polled

If you need to add some stretch and frame to your herd here's your bull. At the top of the breed for WW, YW, MWW and REA.

**Lot 34**

37

JBS Mr Standout 167M

BD: 3-15-24 Black, Polled, PB SM Reg. #4432934
 Act. BW: 80 lbs Adj. 205 Wt: 792 WW Ratio: 120 Adj. YW: 1300
 1-1-25 wt: 1040 90 Day ADG: 3.2 Frame: 6.2 Act. Scrotal: 33.5

OMF Epic E27

Schooley Standout 27G

CLRS Beauty Queen 420 B

Cables Turn Ur Head 501G

JBS Miss Turn Ur Head 853J

JBS Miss Domination 121F

	CE	BW	WW	YW	ADG	
	10.7	0.8	83.1	118.9	0.22	
MCE	MM	MWW	Stay	DOC	CW	YG
4.9	22.2	60.7	18.3	10.8	21.9	-0.28
	MARB	B FAT	REA	API	TI	
	0.3	-0.062	0.57	145.3	85.1	

Dam: 2 calves/111 WWR

Homo Black, Homo Polled

Standout is another new sire for us and this young stud weaned at the #2 spot. Long bodied, clean made eye appealing bull. Dam is becoming one of the top producers in the entire herd.

**Lot 37**

35

JBS Mr Pontiac 902M

BD: 3-2-24 Black, Polled, 5/8 SM Reg. #4432982
 Act. BW: 76 lbs Adj. 205 Wt: 648 WW Ratio: 98 Adj. YW: 1140
 1-1-25 wt: 965 90 Day ADG: 3.1 Frame: 5.4 Act. Scrotal: 33

Gibbs 9114G Essential

JC Mr Pontiac D114K

FSCR D114 Lucille B089XP

CCR Boulder 1339A

JBS Miss Boulder 745G

JBS Miss Bismarck 652E

	CE	BW	WW	YW	ADG	
	15.0	-3.2	77.3	123.4	0.29	
MCE	MM	MWW	Stay	DOC	CW	YG
8.3	26.2	65.8	19.2	13.6	34.9	-0.26
	MARB	B FAT	REA	API	TI	
	0.52	-0.038	0.86	164.7	90.6	

Dam: 4 calves/104 WWR

Smaller framed bull with built in calving ease pedigree. Strong maternal EPD's.

36

JBS Mr Pontiac 920M

BD: 3-13-24 Black, Polled, PB SM Reg. #4432985
 Act. BW: 76 lbs Adj. 205 Wt: 726 WW Ratio: 110 Adj. YW: 1135
 1-1-25 wt: 970 90 Day ADG: 2.6 Frame: 5.5 Act. Scrotal: 33

Gibbs 9114G Essential

JC Mr Pontiac D114K

FSCR D114 Lucille B089XP

RBS Boise B63

JBS Miss Boise 207G

JBS Ms Dew It Right 021Z

	CE	BW	WW	YW	ADG	
	13.4	-1.4	87.5	129.9	0.27	
MCE	MM	MWW	Stay	DOC	CW	YG
7.9	29.0	71.4	20.0	13.4	37.8	-0.33
	MARB	B FAT	REA	API	TI	
	0.38	-0.045	1.07	163.2	93.9	

Dam: 4 calves/109 WWR

Homo Black, Homo Polled

High ranking WW bull with a lighter BW.

38

JBS Mr Standout 701M

BD: 2-21-24 Black, Polled, PB SM Reg. #4432879
 Act. BW: 80 lbs Adj. 205 Wt: 630 WW Ratio: Twin Adj. YW: 1070
 1-1-25 wt: 940 90 Day ADG: 2.6 Frame: 6.2 Act. Scrotal: 35

OMF Epic E27

Schooley Standout 27G

CLRS Beauty Queen 420 B

CCR Cowboy Cut 5048Z

JBS Miss Cowboy Cut 706E

JBS Miss Newsline 0532T

	CE	BW	WW	YW	ADG	
	11.5	0.8	73.0	103.1	0.19	
MCE	MM	MWW	Stay	DOC	CW	YG
7.1	23.2	59.7	19.6	16.0	23.9	-0.22
	MARB	B FAT	REA	API	TI	
	0.38	-0.047	0.53	147.9	80.5	

Dam: 5 calves/101 WWR

Homo Black

Born a twin. Built much like his brother (Lot 37). His sire has been heavily used in the breed the last few years.

39

JBS Mr Standout 732M

BD: 2-23-24 Black, Polled, PB SM Reg. #4432843
 Act. BW: 84 lbs Adj. 205 Wt: 634 WW Ratio: 96 Adj. YW: 1150
 1-1-25 wt: 990 90 Day ADG: 3.2 Frame: 6.8 Act. Scrotal: 34

OMF Epic E27

Schooley Standout 27G

CLRS Beauty Queen 420 B

JBS Big Casino 336Y

JBS Miss Casino 210E

JBS Miss Chisum 41Z

	CE	BW	WW	YW	ADG	
	12.8	-0.6	74.2	107.0	0.21	
MCE	MM	MWW	Stay	DOC	CW	YG
7.3	16.3	53.6	16.6	15.7	27.9	-0.25
MARB	B FAT	REA	API	TI		
0.2	-0.059	0.58	137.4	78.2		

Dam: 6 calves/100 WWR

Homo Black

Larger framed long bodied blaze face bull. Dam is a consistent producing Big Casino cow.

40

JBS Mr Resource 108M

BD: 3-16-24 Black, Polled, 3/4 SM Reg. #4432881
 Act. BW: 72 lbs Adj. 205 Wt: 688 WW Ratio: 104 Adj. YW: 1205
 1-1-25 wt: 950 90 Day ADG: 3.2 Frame: 5.7 Act. Scrotal: 34

Hook's Encore 65E
Bridle Bit Resource G9117

Bridle Bit Miss B452
 TJ Main Event 503B

JBS Miss Main Event 653J

JBS Miss Tank2 821D

	CE	BW	WW	YW	ADG	
	15.0	-1.3	81.5	129.2	0.3	
MCE	MM	MWW	Stay	DOC	CW	YG
7.8	28.8	69.1	17.2	13.1	42.2	-0.36
	MARB	B FAT	REA	API	TI	
	0.24	-0.063	1.06	146.9	85.8	

Dam: 2 calves/100 WWR

Homo Black, Homo Polled

Another new sire group. The Resource's come easy and have above average growth. They are all a lot alike in their structure and look. I am really impressed with the females in our replacement pen. Smaller framed with excellent muscle shape.

**Lot 40**

42

JBS Mr Resource 903M

BD: 3-15-24 Black, Polled, 3/4 SM Reg. #4432965
 Act. BW: 87 lbs Adj. 205 Wt: 647 WW Ratio: 98 Adj. YW: 1200
 1-1-25 wt: 975 90 Day ADG: 3.5 Frame: 5.8 Act. Scrotal: 32

Hook's Encore 65E
Bridle Bit Resource G9117

Bridle Bit Miss B452

CCR Boulder 1339A

JBS Miss Boulder 763G

JBS Miss Tank2 326E

	CE	BW	WW	YW	ADG	
	14.5	-0.3	74.2	119.4	0.28	
MCE	MM	MWW	Stay	DOC	CW	YG
9.7	27.0	64.4	17.8	14.9	33.5	-0.35
	MARB	B FAT	REA	API	TI	
	0.37	-0.057	0.97	148.7	82.7	

Dam: 4 calves/96 WWR

Homo Black

Attractive smaller framed bull that has good EPD's all the way across.

**Lot 42**

41

JBS Mr Resource 065M

BD: 3-11-24 Black, Polled, 3/4 SM Reg. #4432834
 Act. BW: 78 lbs Adj. 205 Wt: 663 WW Ratio: 101 Adj. YW: 1245
 1-1-25 wt: 1000 90 Day ADG: 3.6 Frame: 5.8 Act. Scrotal: 36

Hook's Encore 65E
Bridle Bit Resource G9117

Bridle Bit Miss B452
 Hart All in 6036

JBS Miss All In 611H

JBS Miss Casino 911D

	CE	BW	WW	YW	ADG	
	14.9	-0.8	79.4	135.9	0.35	
MCE	MM	MWW	Stay	DOC	CW	YG
8.7	28.5	69.6	16.7	13.9	44.4	-0.28
	MARB	B FAT	REA	API	TI	
	0.31	-0.044	1.0	147.7	85.3	

Dam: 2 calves/104 WWR

Homo Black, Homo Polled

Smooth made calving ease prospect. Dam is a really solid second calf female. This guy has really come on nicely since weaning.

**Lot 41**

43

JBS Mr Resource 120M

BD: 3-17-24 Black, Polled, 3/4 SM Reg. #4432869
 Act. BW: 89 lbs Adj. 205 Wt: 664 WW Ratio: 101 Adj. YW: 1190
 1-1-25 wt: 930 90 Day ADG: 3.3 Frame: 5.8 Act. Scrotal: 33.5

Hook's Encore 65E
Bridle Bit Resource G9117

Bridle Bit Miss B452

TJ Main Event 503B

JBS Miss Main Event 9J

ES B9

	CE	BW	WW	YW	ADG	
	13.9	-0.1	85.4	138.6	0.33	
MCE	MM	MWW	Stay	DOC	CW	YG
8.1	27.7	70.0	15.3	13.1	47.4	-0.33
	MARB	B FAT	REA	API	TI	
	0.24	-0.054	1.12	138.6	85.3	

Dam: 2 calves/100 WWR

Homo Black, Homo Polled

Smaller framed bull with style and balance in EPD's. Similar pedigree to the Lot 40 bull, with Main Event on the bottom side.



44

JBS Mr Revved Up 166M

BD: 4-2-24 Black, Polled, PB SM Reg. #4432855
 Act. BW: 86 lbs Adj. 205 Wt: 745 WW Ratio: 113 Adj. YW: 1220
 1-1-25 wt: 925 90 Day ADG: 3.0 Frame: 5.8 Act. Scrotal: 33

KBHR Revolution H071

KBHR Revved Up K157

KBHR E197

Cables Turn Ur Head 501G

JBS Miss Turn Ur Head 331J

JBS Miss Force 120A

Dam: 2 calves/114 WWR

Homo Black, Homo Polled

A younger bull by the Revolution son we bought in North Dakota. We didn't get many calves out of him, but this guy really shines. Moderate frame and heavy WW. His Turn-Ur-Head dam is making her way as one of our top young cows. Ranked 15/121.

	CE	BW	WW	YW	ADG	
	10.6	1.4	94.1	138.9	0.28	
MCE	MM	MWW	Stay	DOC	CW	YG
6.0	27.3	71.9	19.0	12.4	34.6	-0.42
	MARB	B FAT	REA	API	TI	
	0.44	-0.063	1.17	158.8	95.8	



Lot 44

46

JBS Mr Homeland 933M

BD: 3-3-24 Black, Polled, 3/8 SM Reg. #4433039
 Act. BW: 98 lbs Adj. 205 Wt: 738 WW Ratio: 112 Adj. YW: 1310
 1-1-25 wt: 1115 90 Day ADG: 3.6 Frame: 7.0 Act. Scrotal: 38

Redhill 672X X004 231A

CLRS Homeland 327H

CLRS Always Xcellent

	CE	BW	WW	YW	ADG	
	10.5	1.8	93.5	143.7	0.31	
MCE	MM	MWW	Stay	DOC	CW	YG
7.8	34.2	78.6	16.4	9.0	34.1	-0.3
	MARB	B FAT	REA	API	TI	
	0.34	-0.048	0.92	136.1	88.3	

JBS Miss Eldorado 120G

JBS Miss Bismarck 806Y

Dam: 4 calves/115 WWR

Homo Black, Homo Polled

Large framed baldy bull that will add frame and pounds. Goes back to the polled Hereford Eldorado bull. All of his dam calves have been high ratioing. Ranked 18/121.



Lot 46

45

JBS Mr 854CC 014M

BD: 4-1-24 Black, Polled, 5/8 SM Reg. #4432998
 Act. BW: 90 lbs Adj. 205 Wt: 704 WW Ratio: 107 Adj. YW: 1195
 1-1-25 wt: 925 90 Day ADG: 3.1 Frame: 6.4 Act. Scrotal: 35

CCR Cowboy Cut 5048Z

UC Pasque H854 BLK

UC Crocus Y333 BLK

TJ Main Event 503B

JBS Miss Main Event 9H

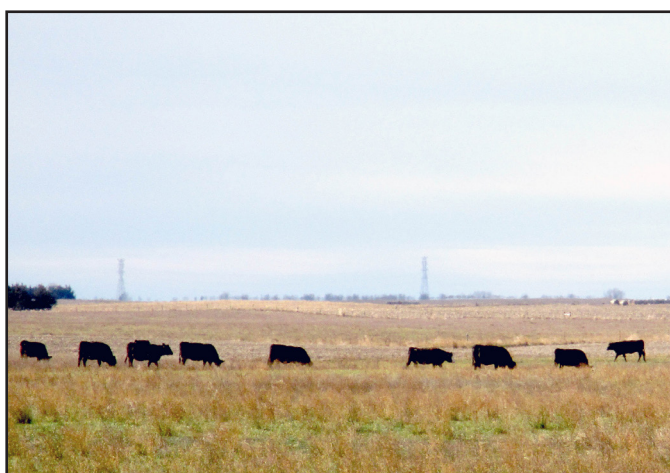
ES B9

Dam: 3 calves/106 WWR

Homo Black

A very complete bull in every aspect. Out of our Cowboy Cut clean-up bull and a Main Event dam. Don't overlook this young prospect.

	CE	BW	WW	YW	ADG	
	12.2	0.4	84.9	129.6	0.28	
MCE	MM	MWW	Stay	DOC	CW	YG
6.7	25.4	66.3	16.6	11.2	35.5	-0.24
	MARB	B FAT	REA	API	TI	
	0.26	-0.048	0.72	138.4	84.1	



47

JBS Mr Hilger One 639M

BD: 2-25-24 Red, Polled, 5/8 SM Reg. #4432929
 Act. BW: 93 lbs Adj. 205 Wt: 721 WW Ratio: 109 Adj. YW: 1235
 1-1-25 wt: 1080 90 Day ADG: 3.2 Frame: 6.7 Act. Scrotal: 33.5

GW Movin On 183C

GW Hilger One 454H

GW Miss Yukon Jack 913E

SAV Billiance 8077

JBS Miss Brilliance 232D

JBS Miss Indy 750Z

Dam: 7 calves/105 WWR

Homo Polled, Non-Dilutor

Large framed percentage bull that had our attention all summer as we watched him grow. His dam has had 3 bulls in our prior sales. Ranked 22/121.

	CE	BW	WW	YW	ADG	
	9.5	1.8	90.9	141.9	0.32	
MCE	MM	MWW	Stay	DOC	CW	YG
3.6	26.6	71.3	16.8	15.5	49.9	-0.13
	MARB	B FAT	REA	API	TI	
	0.36	-0.025	0.76	139.3	87.4	



Lot 47

48 JBS Mr Copperhead 253M

BD: 2-16-24 Red, Polled, 3/4 SM Reg. #4433011
 Act. BW: 82 lbs Adj. 205 Wt: 688 WW Ratio: 104 Adj. YW: 1225
 1-1-25 wt: 1000 90 Day ADG: 3.3 Frame: 5.7 Act. Scrotal: 38

GW Movin On 183C

GW Copperhead 919G

GW Miss Direct Drive 932E

KBHR All American G104

JBS Miss All American 922K

JBS Miss Bulletproof 426G

	CE	BW	WW	YW	ADG	
	12.3	0.3	91.5	144.0	0.33	
MCE	MM	MWW	Stay	DOC	CW	YG
8.6	27.0	72.1	12.8	19.5	31.5	-0.43
	MARB	B FAT	REA	API	TI	
	0.61	-0.083	0.99	156.2	98.9	

Homo Polled, Non-Dilutor

Smaller framed bull from a 1st calver with excellent muscle expression and cow making EPD's. These Copperheads come small but above average at weaning.



Lot 48

51 JBS Mr Earl 625M

BD: 3-22-24 Black, Polled, 3/4 SM Reg. #4432948
 Act. BW: 98 lbs Adj. 205 Wt: 716 WW Ratio: 109 Adj. YW: 1235
 1-1-25 wt: 1000 90 Day ADG: 3.2 Frame: 6.2 Act. Scrotal: 34

BBS True Justice B110

3BS Earl 90G

3BS 30Tanker 707E

CCR Cowboy Cut 5048Z

JBS Miss Cowboy Cut 0616D

JBS Miss LTD 225S

	CE	BW	WW	YW	ADG	
	8.2	3.1	90.4	128.8	0.24	
MCE	MM	MWW	Stay	DOC	CW	YG
4.9	29.3	72.9	19.0	15.4	38.7	-0.26
	MARB	B FAT	REA	API	TI	
	0.29	-0.056	0.78	140.7	86.3	

Dam: 7 calves/109 WWR

Homo Black, Hetero Polled

High rating Earl son out of the 616 Cowboy Cut Cow who seems to have a bull in every sale. In fact 5 of her 6 bull calves have made the sale. Dam is smaller framed but always weans a heavy calf.



Lot 51

49 JBS Mr Copperhead 256M

BD: 2-22-24 Red, Polled, 3/4 SM Reg. #4432846
 Act. BW: 72 lbs Adj. 205 Wt: 663 WW Ratio: 101 Adj. YW: 1215
 1-1-25 wt: 965 90 Day ADG: 3.4 Frame: 5.9 Act. Scrotal: 37

GW Movin On 183C

GW Copperhead 919G

GW Miss Direct Drive 932E

KBHR All American G104

JBS Miss All American 764K

JBS Miss Tank2 060E

	CE	BW	WW	YW	ADG	
	14.0	-1.6	81.3	128.3	0.29	
MCE	MM	MWW	Stay	DOC	CW	YG
9.7	28.3	69.4	13.4	22.7	29.2	-0.41
	MARB	B FAT	REA	API	TI	
	0.57	-0.081	0.93	156.6	94.2	

Homo Polled, Non-Dilutor

Almost a clone to the previous lot brother. Would make a great pair of pasture mates. Their sire is in the top 1% of the breed for docility.

52 JBS Mr Earl 707M

BD: 3-11-24 Black, Polled, PB SM Reg. #4432938
 Act. BW: 98 lbs Adj. 205 Wt: 708 WW Ratio: 107 Adj. YW: 1170
 1-1-25 wt: 980 90 Day ADG: 2.9 Frame: 6.3 Act. Scrotal: 34

BBS True Justice B10

3BS Earl 90G

3BS 30Tanker 707E

RBS Boise B63

JBS Miss Boise 107E

JBS Miss Big Sky 0938Y

	CE	BW	WW	YW	ADG	
	8.9	2.8	86.4	119.8	0.21	
MCE	MM	MWW	Stay	DOC	CW	YG
5.7	27.6	69.4	19.7	13.2	34.2	-0.42
	MARB	B FAT	REA	API	TI	
	0.12	-0.085	0.98	133.2	80.6	

Dam: 6 calves/102 WWR

Homo Black, Hetero Polled

Long bodied smooth made Earl son. This bull is better than his EPD's would indicate. Ranked 31/121.



Lot 52

50 JBS Mr Cadillac 061M

BD: 3-6-24 Red, Polled, 5/8 SM Reg. #4432848
 Act. BW: 79 lbs Adj. 205 Wt: 617 WW Ratio: 94 Adj. YW: 1160
 1-1-25 wt: 940 90 Day ADG: 3.4 Frame: 5.5 Act. Scrotal: 34

Hooks Trinity 9T

Leachman Cadillac L025A

Rempe Stabilizer YD032

RFS Bulletproof B42

JBS Miss Bulletproof 325H

JBS Miss Pace 821A

	CE	BW	WW	YW	ADG	
	13.7	-1.2	74.6	122.7	0.3	
MCE	MM	MWW	Stay	DOC	CW	YG
4.3	27.0	65.5	8.8	14.3	36.0	-0.2
	MARB	B FAT	REA	API	TI	
	0.21	-0.033	0.72	122.0	79.2	

Dam: 3 calves/101 WWR

Homo Polled, Non-Dilutor

Smaller framed smooth made Cadillac son. Several maternal half brothers have sold well in our sales.

53

JBS Mr Earl 614M

BD: 3-8-24 Black, Polled, 3/4 SM Reg. #4433020
Act. BW: 97 lbs Adj. 205 Wt: 702 WW Ratio: 106 Adj. YW: 1185
1-1-25 wt: 1010 90 Day ADG: 3.0 Frame: 7.1 Act. Scrotal: 33.5

BBS True Justice B10
3BS Earl 90G
3BS 3OTanker 707E
WS Stepping Stone B44
JBS Ms Step Stone 701D
JBS Miss Frontier 501T

	CE	BW	WW	YW	ADG	
	9.9	1.9	82.0	119.9	0.24	
MCE	MM	MWW	Stay	DOC	CW	YG
5.0	27.3	67.1	17.3	15.8	31.4	-0.24
	MARB	B FAT	REA	API	TI	
	0.25	-0.059	0.6	135.2	81.3	

Dam: 7 calves/103 WWR

Hetero Black

Baldy face Earl son that's long bodied and taller framed. Maternal brother sold to NLC Ranch in our 2020 sale.



Lot 53

56

JBS Mr Gold Strike 812M

BD: 2-26-24 Black, Polled, 3/4 SM Reg. #4432859
Act. BW: 86 lbs Adj. 205 Wt: 651 WW Ratio: 99 Adj. YW: 1160
1-1-25 wt: 995 90 Day ADG: 3.1 Frame: 6.4 Act. Scrotal: 33

TJ Gold 274G
TJ Gold Strike 506J
TJ 52A
RBS Boise B63
JBS Miss Boise 115F
JBS Miss Bismarck 307Y

	CE	BW	WW	YW	ADG	
	12.8	0.4	81.6	120.7	0.24	
MCE	MM	MWW	Stay	DOC	CW	YG
6.8	30.3	71.9	17.8	11.5	36.5	-0.3
	MARB	B FAT	REA	API	TI	
	0.23	-0.035	1.03	140.6	82.9	

Dam: 5 calves/101 WWR

Homo Black, Homo Polled

Nice Gold Strike with moderate BW and WW. Strong maternal WW and Milk EPD's.

57

JBS Mr 551 Prof 122M

BD: 4-5-24 Black, Polled, PB SM Reg. #4432943
Act. BW: 84 lbs Adj. 205 Wt: 701 WW Ratio: 106 Adj. YW: 1180
1-1-25 wt: 890 90 Day ADG: 3.0 Frame: 5.3 Act. Scrotal: 32

KRJ F8148
JBS Mr Profit 551H
JBS Miss Cowboy Cut 851C
TJ Main Event 503B
JBS Miss Main Event 445J
JBS Miss Casino 065B

	CE	BW	WW	YW	ADG	
	12.4	0.4	82.3	121.7	0.25	
MCE	MM	MWW	Stay	DOC	CW	YG
6.4	19.3	58.8	16.0	10.9	27.8	-0.39
	MARB	B FAT	REA	API	TI	
	0.05	-0.086	0.81	131.0	79.7	

Dam: 2 calves/99 WWR

Homo Black

Younger bull by our Profit son that has worked well for us. Great cow family. His Granddam is 11 years old and one of our best Casino daughters ever.



Lot 57

58

JBS Mr 551 Prof 165M

BD: 3-31-24 Black, Polled, PB SM Reg. #4432937
Act. BW: 94 lbs Adj. 205 Wt: 695 WW Ratio: 105 Adj. YW: 1195
1-1-25 wt: 905 90 Day ADG: 3.1 Frame: 5.8 Act. Scrotal: 34

KRJ F8148
JBS Mr Profit 551H
JBS Miss Cowboy Cut 851C
3BS Earl 90G
JBS Miss Earl 846J
JBS Miss Tank2 218F

	CE	BW	WW	YW	ADG	
	9.6	2.5	83.3	120.7	0.23	
MCE	MM	MWW	Stay	DOC	CW	YG
6.8	23.0	62.8	17.9	12.3	31.1	-0.36
	MARB	B FAT	REA	API	TI	
	0.1	-0.081	0.77	129.5	78.4	

Dam: 2 calves/102 WWR

Hetero Black

Another nice Profit son out of one of our top young Earl daughters. Young calf that kept pace with his older brothers.



**We THANK YOU for your interest and consideration of
Benda Ranch Simmentals & SimAngus.**
We absolutely stand behind our cattle. Let us know if any issues come up.
**We strive to do what is right for each customer and
will correct any problems to the best of our ability.**
Our goal is that you'll be happy and satisfied with the results.

**We are very grateful and honored that you allow us to have the opportunity
to be your source for high quality Simmentals & SimAngus.**
THANK YOU!

Benda Simmental Ranch

JIM AND JAY BENDA
26106 366th Ave. • Kimball, SD 57355



Address Service Requested

Please bring this catalog to the SALE.

Monday, February 10, 2025 • 1:00 p.m.
Kimball Livestock Exchange
Kimball, South Dakota

WWW.BENDARANCH.COM

